

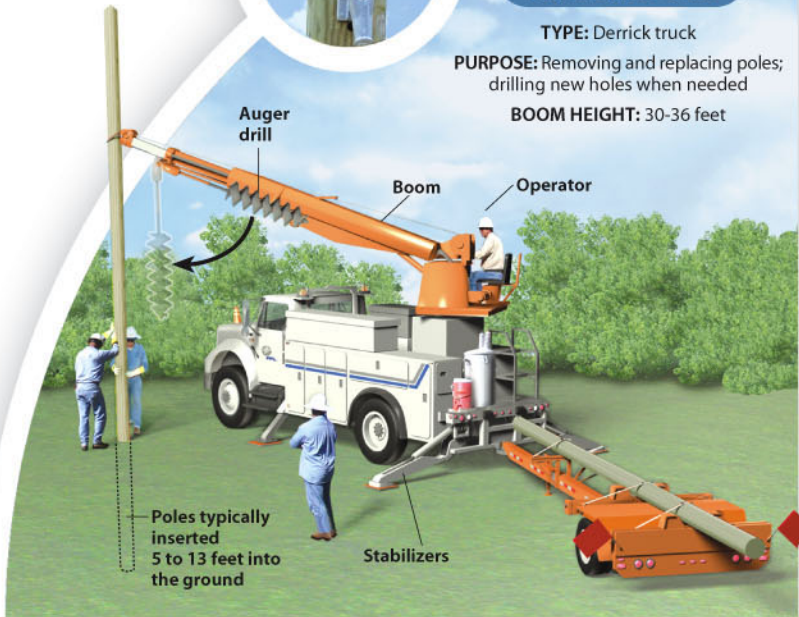
Ever wondered what that FPL truck is doing in your neighborhood after a storm? Here are some specialized vehicles and what each one typically is used for.

**FPL WOODEN POLES** are southern yellow pine pressure treated with a wood preservative — which is why they are greenish in color.



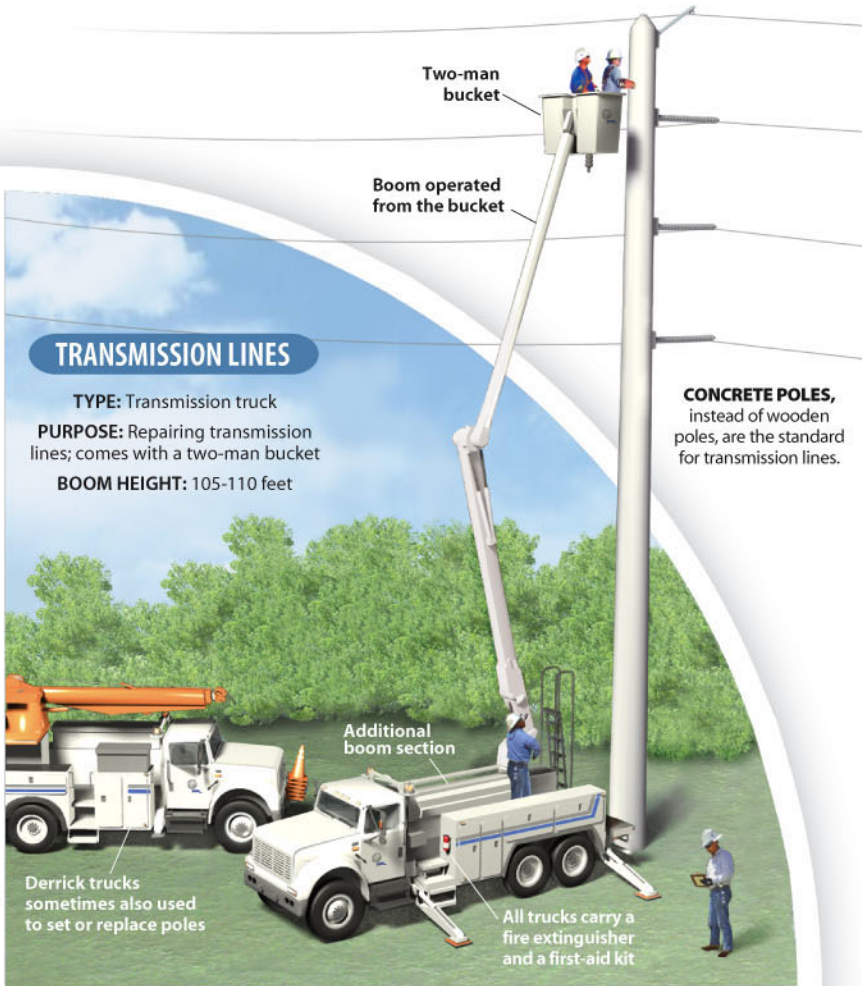
### REPLACING POLES

**TYPE:** Derrick truck  
**PURPOSE:** Removing and replacing poles; drilling new holes when needed  
**BOOM HEIGHT:** 30-36 feet



### TRANSMISSION LINES

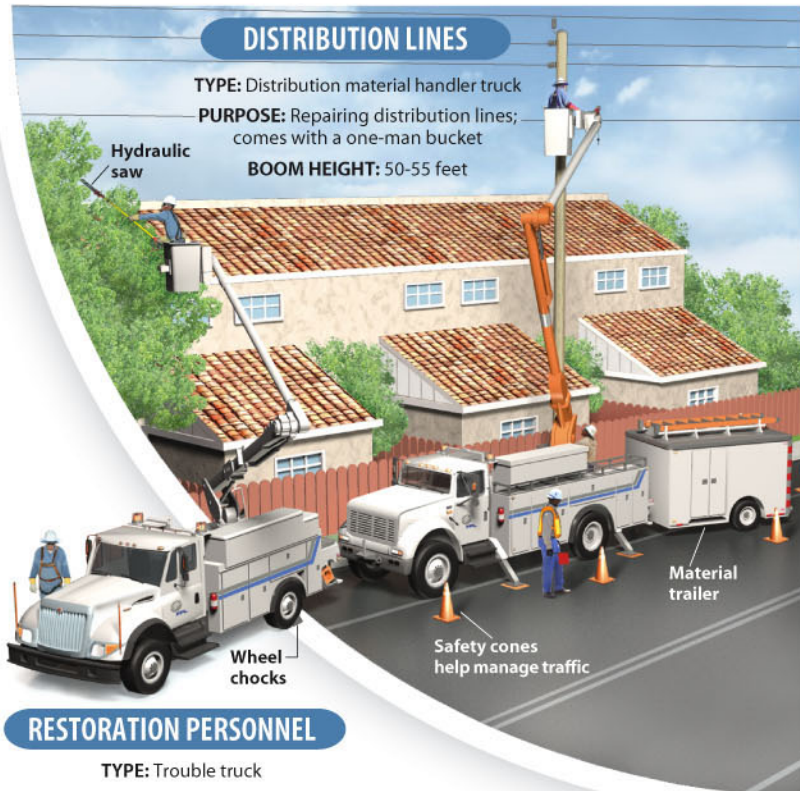
**TYPE:** Transmission truck  
**PURPOSE:** Repairing transmission lines; comes with a two-man bucket  
**BOOM HEIGHT:** 105-110 feet



**CONCRETE POLES**, instead of wooden poles, are the standard for transmission lines.

### DISTRIBUTION LINES

**TYPE:** Distribution material handler truck  
**PURPOSE:** Repairing distribution lines; comes with a one-man bucket  
**BOOM HEIGHT:** 50-55 feet

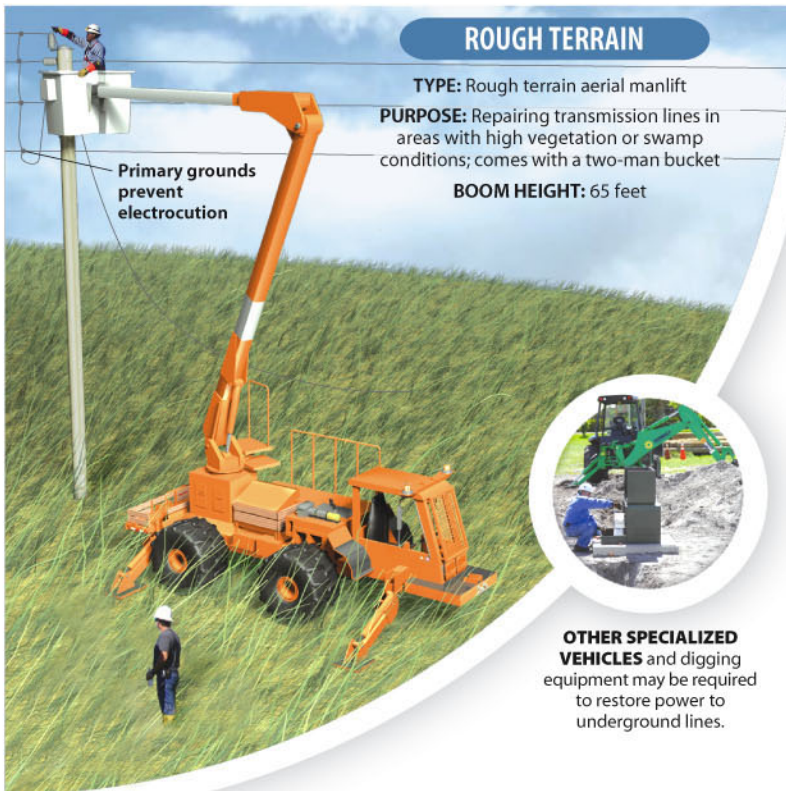


### RESTORATION PERSONNEL

**TYPE:** Trouble truck  
**PURPOSE:** Small jobs, such as initial investigation of a problem and minor fixes; three hybrid versions of this truck  
**BOOM HEIGHT:** 36-42 feet

### ROUGH TERRAIN

**TYPE:** Rough terrain aerial manlift  
**PURPOSE:** Repairing transmission lines in areas with high vegetation or swamp conditions; comes with a two-man bucket  
**BOOM HEIGHT:** 65 feet



# RESTORING YOUR POWER

When a storm causes damage to the electrical power system, Florida Power & Light Co. crews use a fleet of trucks to bring the electricity back.

### CREW GEAR



### BRINGING BACK THE JUICE

After an interruption, power companies restore the power grid by order of priority. Here's how electricity flows and the order in which it is usually repaired. All of these repairs can take place concurrently.

